

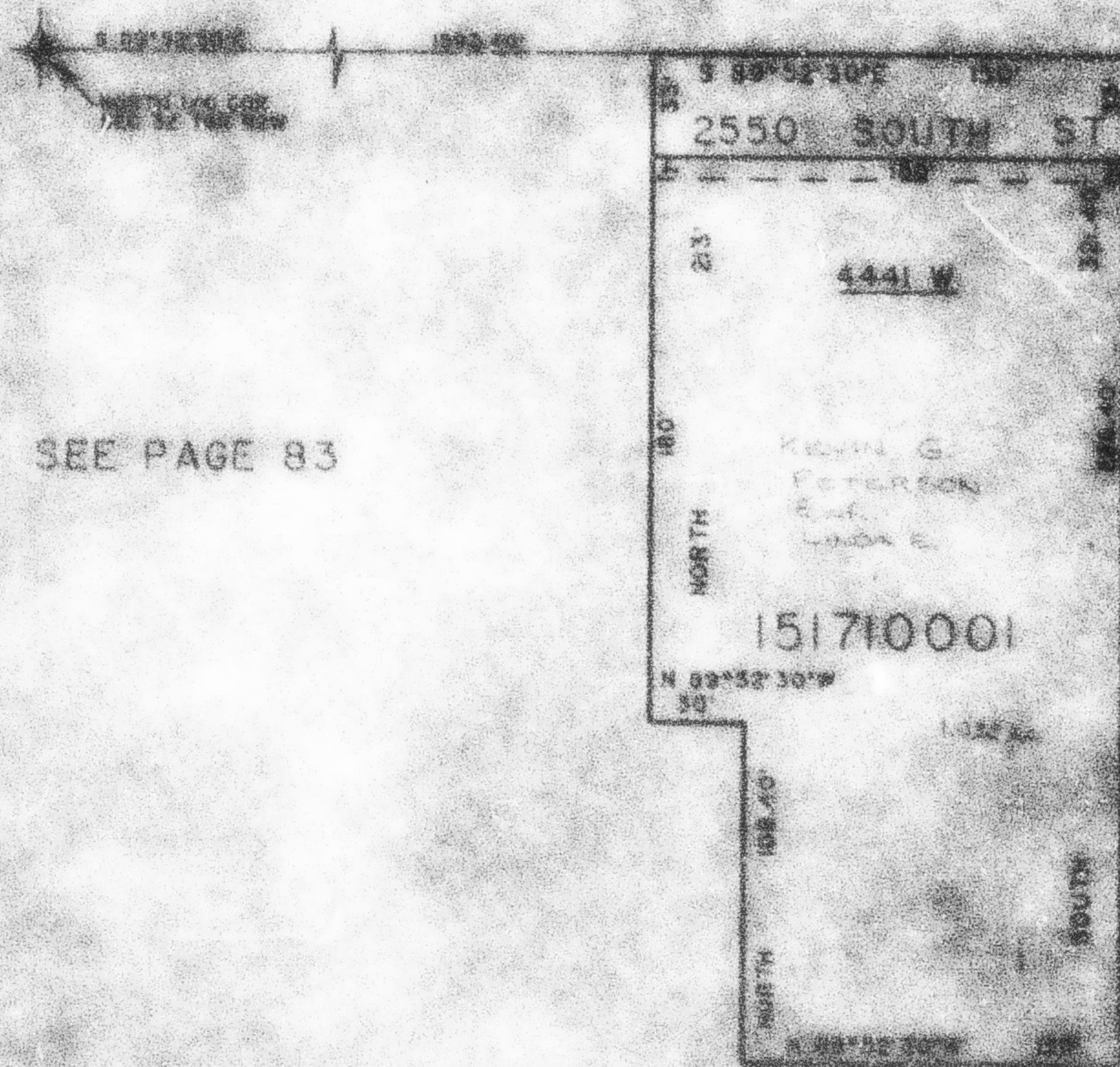
PART OF THE 1/4 OF SEC 20, T. 2N., R. 2E., S. 20E.  
HADLEY SUBDIVISION

IN HENRY COUNTY, MISSOURI

PLAT NO. 117-33-1

SCALE 1" = 200'

SEE PAGE 83



SEE PAGE 83

SEE PAGE 83

RECORDED